

# K BALL ALUMINUM VIBRATOR



The K BALL Vibrator is a very simple and inexpensive flow aid device used in a variety of small bin and hopper applications.

Here are a few additional functions where this items has been very useful:

- Assisting the flow of material from chutes and hoppers
- Preventing bottles and similar objects from locking together and blocking conveyor systems
- Compaction of material in containers and molds.
- Separation of various sizes of material on small screens

## PERFORMANCE DATA

MODEL	FREQUENCY			FORCE OUTPUT			AIR CONSUMPTION		
	30 PSI	60 PSI	90 PSI	30 PSI	60 PSI	90 PSI	30 PSI	60 PSI	90 PSI
	vpm	vpm	vpm	lbs	lbs	lbs	cfm	cfm	cfm
<b>K 8</b>	25000	31000	35000	29	58	81	2.9	5.1	6.9
<b>K 10</b>	22000	28000	30000	56	106	160	3.2	5.3	7.1
<b>K 13</b>	15000	18000	24000	72	124	196	3.3	5.6	7.9
<b>K 16</b>	13000	17000	19000	101	180	248	4.3	7.1	9.9
<b>K 20</b>	10000	14000	16000	162	275	387	4.6	8.1	12
<b>K 25</b>	9000	12000	14000	209	353	461	5.6	10.2	16
<b>K 30</b>	8000	10000	12000	340	556	722	7.6	13.2	20
<b>K 36</b>	7000	9000	10000	464	709	911	9.2	16.8	24

## CONSTRUCTION

Manufactured with a rustproof extruded aluminum body fitted with hardened steel races on which a steel ball rotates.

Nylon endplates are located on either side to contain the ball and prevent the entry of dust and water, thus allowing the unit to be used in dusty or wet environments.

Inlet and exhaust ports have BSP pipe threads, allowing the exhaust air to be piped away, ensuring no restriction on the air outflow.

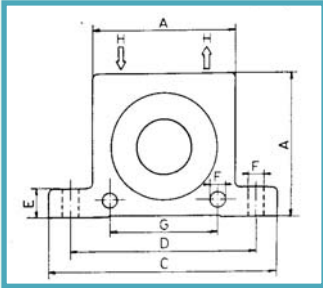
Four mounting holes are provided, two vertical and two horizontal, for handling difficult mounting positions.

Both force output and frequency can be regulated by adjusting the air flow to the vibrator.

Vibrators come complete with inlet fitting and muffler.

<b>Air pressure</b>	from 30 to 90 PSI Max
<b>Pressure regulator</b>	Recommended
<b>Air type</b>	Clean - Use filter of 40 micron or lower
<b>Lubrication</b>	Light use: Not necessary Heavy use: Recommended
<b>Housing</b>	Extruded Aluminum
<b>Coating</b>	Stove enameled cream-grey
<b>End caps</b>	Black nylon polyamide
<b>Max temperature</b>	220° F (100° C)
<b>Noise Level Range</b>	70 to 95 dBA

# DIMENSIONS



MODEL	A	Width	C	D	E	F	G	H (BSP)	Weight (lbs)
K 8	1.97"	0.79"	3.38"	2.68"	0.47"	0.27"	1.57"	1/4"	0.29
K 10	1.97"	0.79"	3.38"	2.68"	0.47"	0.27"	1.57"	1/4"	0.29
K 13	2.56"	0.94"	4.45"	3.54"	0.63"	0.35"	1.97"	1/4"	0.57
K 16	2.56"	1.06"	4.45"	3.54"	0.63"	0.35"	1.97"	1/4"	0.66
K 20	3.15"	1.30"	5.04"	4.09"	0.63"	0.35"	2.36"	1/4"	1.17
K 25	3.15"	1.50"	5.04"	4.09"	0.63"	0.35"	2.36"	1/4"	1.39
K 30	3.94"	1.73"	6.30"	5.12"	0.79"	0.43"	3.15"	3/8"	2.49
K 36	3.94"	1.97"	6.30"	5.12"	0.79"	0.43"	3.15"	3/8"	2.95

## ANODIZED MODELS

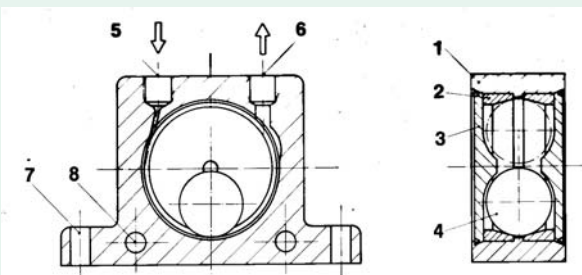
Some K ball vibrators models are now available in black anodized aluminum.

Anodized vibrators are recommended when used in food environments where paint coated items are not allowed. Anodized aluminum has better natural protection against corrosion and wear, due to its rougher surface and the thick oxide layer that surrounds it. Likewise, anodizing prevents aluminum from cracking or peeling from regular use. It is currently available on size 8 and 10 only.



## LOW CLEARANCE K 8 NF

The K8 NF is a ball vibrator with no base mount. With its smaller dimensions (1.97" x 1.97" x 0.79") it can be fit more easily into tiny spaces. It is mounted with the two horizontal bolt holes located in the main housing. Outer surface is polished aluminum with no paint.



1. Extruded aluminum Housing
2. Hardened carbon steel races
3. Black nylon polyamide endplates
4. Chrome steel ball
5. BSP Air inlet
6. BSP Air exhaust
7. Base vertical mounting holes
8. Horizontal mounting holes

  
**ChicagoVibratorProducts**  
*Flow and Compaction*

642 NEWPORT AVENUE  
 WESTMONT, IL 60559  
 800-842-7284 630-920-9411  
 WWW.CHICAGOVIATOR.COM  
 solutions@chivib.com